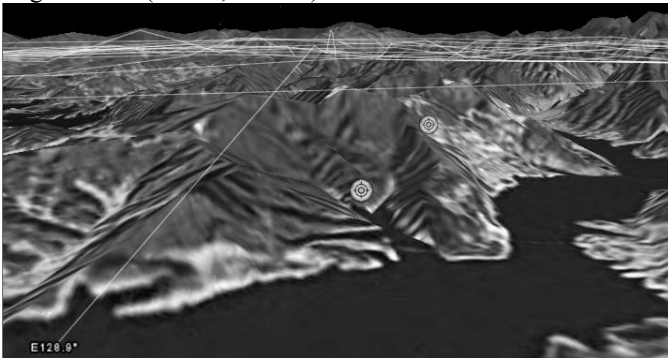


INTENSE PREHISTORIC AURORAL Z-PINCH RECORDINGS: SURVEYS OF SOUTH KOREAN AND THAILAND PETROGLYPHS

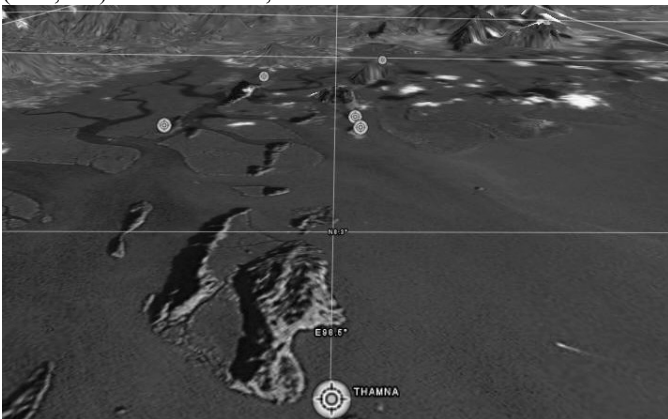
M. A. Van der Sluijs
Mythopedia
British Columbia, Canada

Anthony L. Peratt*, *Fellow IEEE*
Los Alamos National Laboratory
Los Alamos, NM 87545 USA

With precise petroglyph fields-of-view polar south from our loggings at Valcamonica, Italy (10°E, 46°N),¹ the need is to augment our data sets of the North American and European continents (10°E-130°W, 30°-56°N) with longitudes opposite and a range of latitudes¹. Preliminary data from South Korea and Thailand (M.A.V.S) are shown. Sites at Sugok-ri, Imdong-Myeon, Andong-si, Gyeongsangbuk-do, Bangudae, San 234-1, Daegok-ri, Eonyang-eup, Ulsan, Ulju-gun, Stone, Gyeongsangbuk-do, Cheonjeon-ri, San 210, Cheonjeon-ri, Dudong-myeon, Ulju-gun, Ulsan, Gyeongsangbuk-do, were surveyed. The results are preliminary are typical of the Sugok-ri site (129°E, 36.6°N) south channel:



Much logging remains in Thailand and the amount of data collected limited. Nevertheless, pictograph data² from Tham Nak (Naga Cave), Phang-Nga province, and Khao Khian (98E, 8N) were obtained, the sites marked as dots below:



1. A. Peratt, D. Scott, and M.A. Van der Sluijs, *Bull. Am. Phys. Soc.*, v.49, p. 36, 2004.

2. Pictographs can have no FOV and often no directionality.

*U. Pennsylvania Museum of Archaeology and Anthropology.